

BIG IDEAS TO



TO



BLUEPRINTS

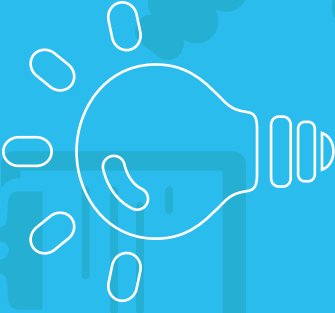


Decisive Grantmaking in Dynamic Times

GRANTMAKERS IN HEALTH

ANNUAL MEETING ON HEALTH PHILANTHROPY

MARCH 13-15, 2013 | SAN FRANCISCO





MARCH 13-15



2013

San Francisco



WHAT DOES IT MEAN TO BE IN THE BUSINESS OF HEALTH TODAY?

Between the Great Recession, the volatile policy arena, the 2012 elections, and the Supreme Court decision on the Affordable Care Act, the new normal for grantmakers may be working under conditions of ongoing dynamic change.

In this shifting landscape, CEOs grapple with defining their roles as health leaders. Staff work hard to stay current on the issues and apply this knowledge to their grantmaking. Trustees attempt to balance concern for the immediate needs of vulnerable populations with the long-term investments that create real change. At all levels, funders have to figure out how to maximize limited dollars; be strategic; and collaborate effectively with other foundations, private institutions, and government.

Join us for the 2013 Grantmakers In Health (GIH) annual meeting—*Big Ideas to Blueprints: Decisive Grantmaking in Dynamic Times*—in San Francisco to learn and discuss how foundations, grantees, and other partners can thrive in these changing times.

MEETING HIGHLIGHTS



We are excited to bring a number of new features to the 2013 GIH annual meeting! To make your time with us even more beneficial, attend *The Art & Science of Health Grantmaking*, now a preconference session. We will also hold a Newcomers' Welcome to start the meeting off in a positive direction for first-time attendees. Finally, we will host a Film Night, giving you the opportunity to view films that have many people buzzing.

THE ART & SCIENCE OF HEALTH GRANTMAKING

GIH's popular workshop *The Art & Science of Health Grantmaking* is now at the annual meeting! Modules on foundation governance, finance and investments, grantmaking, and evaluation will be offered.

NEWCOMERS' WELCOME

Back by popular demand, GIH will offer a get-together for newcomers to the annual meeting. Stop by to learn about GIH, for practical tips on navigating the meeting, and to meet other first-time attendees.

FILM NIGHT

New to the annual meeting! On opening night, GIH will screen award-winning and compelling films that examine health and health care in our country.

PLENARY SESSIONS

The annual meeting is a time to hear from keynote speakers who inform, energize, and challenge. GIH has invited experts and leaders who will do just that and whose ideas and perspectives can be applied to your work.

SITE VISITS

An annual meeting favorite, site visits will take place on the last day of the meeting and will require advance registration. Site visits will focus on healthy housing and school-based health centers.

TERRANCE KEENAN AWARD LUNCHEON

Hear from the 2013 recipient of *The Terrance Keenan Leadership Award in Health Philanthropy*, a true standout in the field.

GUEST COMMENTARIES

Once again GIH has tapped the minds of great thinkers in philanthropy and health to write commentaries complementing meeting content and discussions. They'll leave you with plenty of food for thought.

REGISTER



www.gih.org

ON-LINE

FILM



NIGHT

Join us on the first night of the annual meeting to watch award-winning and compelling films that examine health and health care concerns, and different approaches to fixing them.

Escape Fire: The Fight to Rescue American Healthcare

Potentially “the definitive film on American health care,” *Escape Fire* highlights the seemingly intractable problems of a broken health care system and focuses on transformative solutions, or “escape fires.” The film weaves narratives of patients with forward thinkers in medicine, industry, government, and the U.S. military. A facilitated discussion will take place afterward to engage funders on recognizing and replicating system transformation, as well as using film and media in their work.

Who Cares about Kelsey?

Dan Habib’s film *Who Cares about Kelsey?* documents the lives of students with emotional and behavioral challenges, and shows innovative educational approaches that help these students succeed—while improving overall school culture and climate. *Who Cares about Kelsey?* will push viewers to reconsider “problem kids” and spark new conversations about empowering emotionally and behaviorally challenged youth. A facilitated discussion will follow the screening.

THE ART & SCIENCE OF HEALTH GRANTMAKING

WEDNESDAY, MARCH 13: 9:00 A.M. – 3:00 P.M.

GIH's popular workshop *The Art & Science of Health Grantmaking* is now a preconference session! Designed for both staff and trustees—those new to the field and seasoned grantmakers—this program will explore the ins and outs of grantmaking and foundation operations, as well as provide opportunities for hands-on professional development.

The preconference will offer two-hour modules delving into a range of issues, including foundation governance, finance and investments, grantmaking, and evaluation. Additional operationally-focused breakout sessions will also be scheduled throughout the annual meeting.

PRECONFERENCE REGISTRATION FEES

GIH FUNDING PARTNERS

- \$200 per registrant

NON-FUNDING PARTNERS

- \$300 per registrant

PLENARY SESSIONS



Plenary sessions will feature key leaders in the field who will challenge grantmakers to think in new ways. *The Terrance Keenan Leadership Award in Health Philanthropy* will be presented to an exceptional grantmaker whose work and accomplishments reflect the best in the field.

WEDNESDAY, MARCH 13: 4:00 – 5:15 P.M.

THURSDAY, MARCH 14: 10:00 – 11:00 A.M.

FRIDAY, MARCH 15: 10:00 – 11:00 A.M.

Provocative Plenary Sessions

A big idea can take many forms. It can relate to new ways of delivering high-quality, cost-effective health care; to ways of connecting people with the food and housing and other services that support good health in addition to health care; to applying global insights to strategies for improving health in local communities—and everything in between. In challenging, dynamic times like those facing health funders today, the temptation may be to stick with the tried and true, but the need to think creatively is actually greater. Whether within program areas or across grantmaking portfolios, there are opportunities to innovate and even to experiment.

Big ideas can help drive the evolution of health philanthropy, provided they demonstrate their usefulness and their sustainability. Plenary speakers will be people who have demonstrated the vision to translate big ideas into on-the-ground programs and strategies for improving health. They will be leaders with the rare combination of skills that is needed not only to bring ideas to life, but also to sustain those practical applications. We have asked them to raise tough questions and to challenge grantmakers to think creatively about what you can do to bring about meaningful and achievable change. Our goal is that their stories will help you to identify and act on the big ideas that will move your work to the next level.

THURSDAY, MARCH 14: 1:15 – 2:30 P.M.

Terrance Keenan Award Luncheon

Each year, GIH has the privilege of presenting *The Terrance Keenan Leadership Award in Health Philanthropy* to an exceptional grantmaker who inspires, encourages, challenges, and gets the job done. The 2013 recipient is no exception. Hear from this outstanding individual whose innovative leadership, vision, and work have truly made a difference and valuable contribution to health, wellness, and public policy.

**ANNUAL
MEETING**

NEWS & UPDATES



www.gih.org

BREAKOUT SESSIONS



Tap into the expertise of fellow health grantmakers and learn about different efforts and investments making real change. Topics range from healthy eating/active living, behavioral health, and health reform, to foundation operations, integrated care, disparities, and oral health. There's something for everyone!

THURSDAY, MARCH 14: 11:30 A.M. – 1:00 P.M.

- Assess and Address: Protecting Health Where We Live, Work, and Play
- Bridging Health Care Sectors to Advance the Oral Health of Pregnant Women
- Creating and Measuring Success in Diversifying Approaches to Health
 - End-of-Life Care: Let's Talk About It
 - Parks for Health
 - Partnering to Align Integrated Care Delivery and Payment
 - Smoothing Payout in Volatile Financial Times
 - Without a Net: Leveraging the Affordable Care Act

THURSDAY, MARCH 14: 3:00 – 4:30 P.M.

- The Boomer Explosion: A Creative Look at Aging and Communities
- The Convergence Innovation Fund: Catalyzing Transformation
- Creating Communities of Wellness and Resilience Where Children and Families Flourish
- Developing and Linking Federally Qualified Health Centers to Improve the Delivery of Care
- Using Program-Related Investments to Bring Big Ideas to Life
- What's Keeping You Up at Night: CEOs / Navigating the Risk-Reward Proposition of Using Consultants
- What's Keeping You Up at Night: Program Staff
- What's Keeping You Up at Night: Trustees

FRIDAY, MARCH 15: 11:30 A.M. – 1:00 P.M.

- The Board's Role in Setting and Adopting a Health and Racial Equity Frame (*trustees only*)
- A Case Study in Improving Care for Medicare-Medicaid Enrollees
- Deploying National Nonprofit Networks as Foot Soldiers in the Battle Against Chronic Disease
- Foundations as Change Agents
- Health Impact Assessment: Building Community Power and Advancing Equity
- Integrated Approaches to Address Health Disparities: HIV/AIDS Case Example
- Transformation of the Safety Net through Innovation and Risk Taking
- Transforming Behavioral Health Care with Integration and Assertive Case Management

**BREAKOUT
SESSION****DESCRIPTIONS**www.gih.org

SITE VISITS



Sign up for a site visit to experience the work that nonprofits and foundations are doing in the Bay Area. Advance registration is required. If space is still available before the start of the meeting, registration will continue on site. Site visit registration fees will go to the organizations hosting the visits.

SITE VISIT REGISTRATION FEES

GIH FUNDING PARTNERS

- \$25 per registrant

NON-FUNDING PARTNERS

- \$50 per registrant

**FOLLOW US
TWITTER**



[@GIHealth](#)

#GIH2013

FRIDAY, MARCH 15: 1:30 – 4:00 P.M.

Designing, Building, and Maintaining Healthy Places

The Health and Housing Funders' Forum will conduct a site visit that provides participants with a visual and experiential understanding of the impact of place on health. Participants will visit a senior community at the San Pablo Hotel, which provides community-based health care and residential services to older adult tenants. Presenters will showcase a campaign to create and maintain healthy housing for low-income families living in single-room occupancy hotels, and promote new legislation and policies to improve living conditions, while also empowering tenants to advocate for better housing conditions. Participants will then visit the West Oakland Residential Lead investigation area to learn about innovative approaches to lead clean-up efforts that have a far less negative impact on neighborhoods than traditional removal. Both locations will demonstrate how to balance concern for the immediate needs of vulnerable populations with the long-term investments that create real change.

Expanding Access to Integrated Care through School-Based Health Centers

Visit the West Oakland Middle School Health Center and see how school-based health centers (SBHCs) have added value and increased access to integrated health care in California. Two regional funders will discuss the strategy and role of a foundation in supporting and promoting SBHCs and share examples of expanded access to integrated behavioral, oral, and primary health care. Presenters will also describe how to best utilize the expertise and knowledge of local grantmakers in funder collaboratives and will address investing in these projects for long-term impact and sustainability. This site visit, organized by The Health Foundation of Greater Cincinnati and the S.D. Bechtel, Jr. Foundation, will be relevant to funders who want to learn more about the ins and outs of SBHCs, as well as funders already involved in these efforts.

AGENDA AT A GLANCE



WEDNESDAY, MARCH 13

9:00 A.M. – 3:00 P.M. THE ART & SCIENCE OF HEALTH GRANTMAKING

- Evaluation
- Finance and Investments
- Foundation Governance
- Grantmaking

3:00 – 3:50 P.M. NEWCOMERS' WELCOME

4:00 – 5:15 P.M. OPENING PLENARY

5:15 – 6:45 P.M. WELCOME RECEPTION

7:00 – 9:00 P.M. FILM NIGHT

- *Escape Fire* and *Who Cares about Kelsey?*

THURSDAY, MARCH 14

6:30 – 7:30 A.M. EXERCISE: YOGA AND GOLDEN GATE BRIDGE WALK

8:00 – 9:30 A.M. CONTINENTAL BREAKFAST

8:00 – 9:30 A.M. NETWORK MEETINGS

- Behavioral Health
- Healthy Eating/Active Living
- Integrative Medicine
- Kids' Access
- National Alliance for Health Equity
- Oral Health
- Public Health

10:00 – 11:00 A.M. MORNING PLENARY

11:30 A.M. – 1:00 P.M. BREAKOUT SESSIONS

- Assess and Address: Protecting Health Where We Live, Work, and Play
- Bridging Health Care Sectors to Advance the Oral Health of Pregnant Women
- Creating and Measuring Success in Diversifying Approaches to Health
- End-of-Life Care: Let's Talk About It
- Parks for Health
- Partnering to Align Integrated Care Delivery and Payment
- Smoothing Payout in Volatile Financial Times
- Without a Net: Leveraging the Affordable Care Act

THURSDAY, MARCH 14

1:15 – 2:30 P.M.	TERRANCE KEENAN AWARD LUNCHEON
3:00 – 4:30 P.M.	BREAKOUT SESSIONS
	<ul style="list-style-type: none"> • The Boomer Explosion: A Creative Look at Aging and Communities • The Convergence Innovation Fund: Catalyzing Transformation • Creating Communities of Wellness and Resilience Where Children and Families Flourish • Developing and Linking Federally Qualified Health Centers to Improve the Delivery of Care • Using Program-Related Investments to Bring Big Ideas to Life • What's Keeping You Up at Night: CEOs / Navigating the Risk-Reward Proposition of Using Consultants • What's Keeping You Up at Night: Program Staff • What's Keeping You Up at Night: Trustees
6:00 – 8:30 P.M.	RECEPTION AT THE FERRY BUILDING

FRIDAY, MARCH 15

6:30 – 7:30 A.M.	EXERCISE
8:00 – 9:30 A.M.	BREAKFAST ROUNDTABLES
10:00 – 11:00 A.M.	MORNING PLENARY
11:30 A.M. – 1:00 P.M.	BREAKOUT SESSIONS
	<ul style="list-style-type: none"> • The Board's Role in Setting and Adopting a Health and Racial Equity Frame (<i>trustees only</i>) • A Case Study in Improving Care for Medicare-Medicaid Enrollees • Deploying National Nonprofit Networks as Foot Soldiers in the Battle Against Chronic Disease • Foundations as Change Agents • Health Impact Assessment: Building Community Power and Advancing Equity • Integrated Approaches to Address Health Disparities: HIV/AIDS Case Example • Transformation of the Safety Net through Innovation and Risk Taking • Transforming Behavioral Health Care with Integration and Assertive Case Management
1:00 – 2:00 P.M.	NETWORKING LUNCH
1:30 – 4:00 P.M.	SITE VISITS
	<ul style="list-style-type: none"> • Designing, Building, and Maintaining Healthy Places • Expanding Access to Integrated Care through School-Based Health Centers

MEETING LOGISTICS



WHO SHOULD ATTEND

Big Ideas to Blueprints: Decisive Grantmaking in Dynamic Times is open to trustees and staff from national, regional, and local grantmaking foundations and corporate giving programs. If you would like to attend the meeting but are not a staff member or trustee of a grantmaking organization, contact Mary Backley. If you are a member of the media and would like to attend, call Leila Polintan. Both staff members can be reached at 202.452.8331.

MARKETPLACE

Take advantage of the annual meeting Marketplace where you can showcase your organization's most recent work and relevant materials at the nation's largest gathering of health grantmakers. The Marketplace, a hub of activity at the conference, will allow organizations sending staff or trustees to the annual meeting to feature a display copy of up to four items. Participating organizations will be listed in conference materials. Space is free.

If you are interested in having your organization participate, check the corresponding box when registering. Additional information, including a Marketplace participation form, will be sent to you. Participation forms must be received by February 18, 2013.

QUESTIONS

Please direct all questions regarding meeting logistics to VRS Meetings & Events Inc. at 202.315.3296 or gih13@vrsevents.com.

HOTEL INFORMATION

Marriott San Francisco Marquis
55 Fourth Street
San Francisco, CA 94103

Reservation Phone: 800.228.9290 or 415.442.6140

Visit www.gih.org for the hotel reservation link.

A block of rooms has been reserved at the Marriott San Francisco Marquis for GIH meeting attendees at the special rate of \$239/night for single or double occupancy. This room rate also applies three days before and after the conference, based on availability.

Reserve on-line at www.gih.org and follow the link to the “2013 GIH Annual Meeting” page. Attendees may also make reservations by calling 800.228.9290 or 415.442.6140. Be sure to indicate that you are with Grantmakers In Health to receive the discount rate, available until February 8, 2013, or until the GIH room block is filled, whichever occurs first. Reserve your room early. Reservations received after February 8 or after the room block is filled will be accepted on a space-available basis and may be at a higher rate. Registering for the meeting does not automatically reserve a room at the hotel.

GETTING TO THE MEETING

The closest airport to the Marriott San Francisco Marquis is San Francisco International Airport (SFO). For information on airline services, visit www.flysfo.com. There is a regular hotel shuttle that operates from SFO (every 15 minutes) between 5 a.m.–7 p.m. Taxi fare is approximately \$45 each way.

Oakland International Airport (OAK) is another option. For more information on airlines servicing OAK, visit www.flyoakland.com. The hotel does not provide shuttle service for this airport. Taxi fare is approximately \$50 each way.

**ANNUAL
MEETING**



www.gih.org

INFORMATION

MEETING REGISTRATION



REGISTER ON-LINE

Register by **Monday, February 18** at www.gih.org. For those who would like to register by fax or mail, a hard copy registration form is available at www.gih.org.

PAYMENT

Payment must accompany registration in order to be processed.

ANNUAL MEETING FEES

- GIH Funding Partners: \$775 per registrant
- Non-Funding Partners: \$1,550 per registrant

PRECONFERENCE FEES

- GIH Funding Partners: \$200 per registrant
- Non-Funding Partners: \$300 per registrant

SITE VISIT FEES

- GIH Funding Partners: \$25 per registrant
- Non-Funding Partners: \$50 per registrant

CONFIRMATION

Confirmation e-mails will be sent to every individual who registers by February 18. This will be your official receipt and will outline the details of your registration, including sessions requiring additional fees. Confirmation receipts for registrations received after February 18 will be available on site at the meeting.

LATE FEES AND CANCELLATIONS

A late fee of \$150 will be charged to attendees whose registration forms are received after February 18. Pending availability, on-site registration will be accepted with a surcharge of \$150 in addition to the late fee. Cancellations in writing, received no later than February 18, will receive a refund, less a \$150 administrative fee. No requests for refunds after this date will be accepted; however, a substitute participant may attend the meeting by notifying GIH in advance.



REGISTER

ON-LINE

BY MONDAY, FEBRUARY 18



www.gih.org

BIG IDEAS TO BLUEPRINTS



GRANTMAKERS IN HEALTH
ANNUAL MEETING ON HEALTH PHILANTHROPY
MARCH 13-15, 2013 | SAN FRANCISCO



www.gih.org