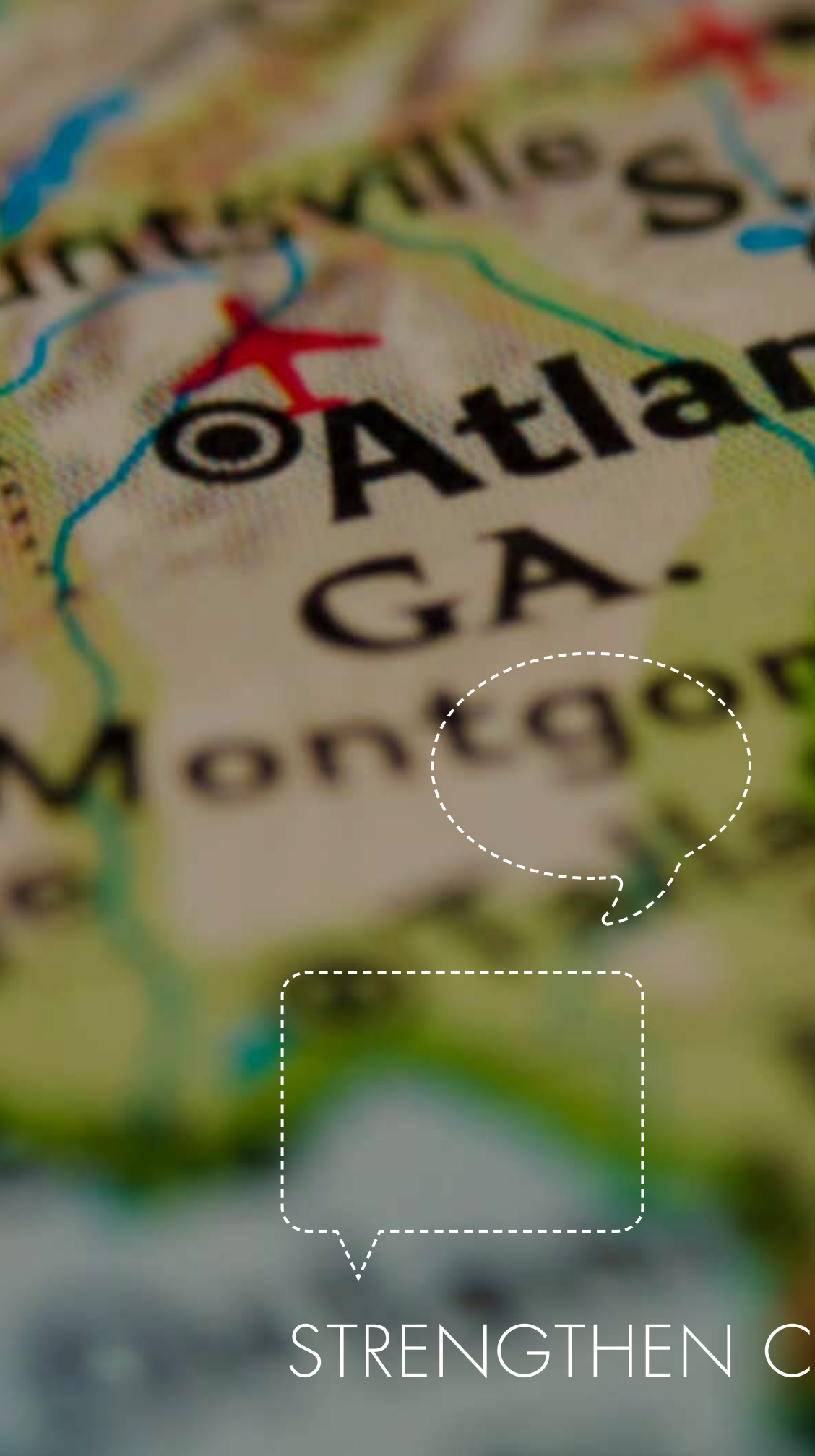




# THE POWER OF VOICE

GRANTMAKERS IN HEALTH  
ANNUAL MEETING ON HEALTH PHILANTHROPY  
MARCH 5-7, 2014 ATLANTA, GEORGIA



STRENGTHEN C

LOGISTICS + REGISTRATION

AGENDA AT A GLANCE

SESSIONS + SITE VISITS

PRECONFERENCE WORKSHOP

MEETING HIGHLIGHTS

## THE POWER OF VOICE

Grantmakers wield enormous influence. At their best, they use this influence to search for next generation ideas; test new models and bring them to scale; and take advantage of philanthropy's staying power to strengthen community resiliency, build new fields of work, and focus on issues over time.

With this great influence, however, comes a great responsibility: to take an active role in securing change. When, where, and how should philanthropy use the power of its voice? When, where, and how should it lift up the voice of others?

Join us March 5–7 for the 2014 Grantmakers In Health (GIH) annual meeting *The Power of Voice* to reflect on the power of voice in all of its manifestations. We look forward to your insights and to seeing you in Atlanta.

# ONNECTIONS



# MEETING H

**G**rantmakers In Health makes every effort to design an annual meeting that informs, inspires, and energizes your work. The 2014 gathering offers a mix of traditional elements, as well as new ways to learn and connect with other grantmakers. Read on to see what will be offered and why attending is a smart investment of your time.

## NEWCOMERS' WELCOME

Will this be your first GIH annual meeting? Attend this welcome orientation for tips on making the most out of your time in Atlanta, to meet other first-time attendees, and to learn more about GIH.

## PLENARY SESSIONS

**Nadine Burke Harris, Alan Jenkins, and Wayne Jonas** headline the 2014 annual meeting, promising for lively and engaging remarks.

## FILM SCREENINGS

Watch award-winning and compelling films that examine health and health care, and discuss how the ideas presented intersect with your work.

## DINE-AROUNDS

New to the annual meeting, dine-arounds are a bonus opportunity to continue conversations and further connect with colleagues.



# HIGHLIGHTS

## SITE VISITS

Step out and see various projects grantmakers are supporting in Atlanta. *Advance registration is required.*


## TERRANCE KEENAN AWARD LUNCHEON

Hear from the 2014 recipient of *The Terrance Keenan Leadership Award in Health Philanthropy*, a grantmaker whose achievement and commitment will inspire your own work.

## GUEST COMMENTARIES

Talented and passionate thinkers in health philanthropy share their insights and experiences related to the meeting theme *The Power of Voice*.





# FILM NIGHT

Recognizing the power of film and its capacity to influence, the annual meeting will feature the following films that can be used as a springboard for collaboration and ideas to advance your work. Film night is scheduled for Thursday, March 6, 6:00 – 8:00 p.m.

## AGE OF CHAMPIONS

Called “infectiously inspiring” by *The Washington Post*, *Age of Champions* follows five competitors who go for gold at the National Senior Olympics. Watch a 100-year-old tennis champion, an 86-year-old pole vaulter, and basketball grandmothers triumph over the limitations of age. This award-winning documentary inspires viewers to be healthier, happier, and more active throughout their lives.

## DEEPSOUTH

Compassionate, powerful, and poetic, *deepsouth* shines a spotlight on the HIV/AIDS crisis and its impact on the rural South. It is the story of how, beneath layers of history, poverty, and soaring HIV infections, four individuals create their own solutions to survive. Representing different perspectives, the film looks at underlying social circumstances to explain the pervasiveness of HIV/AIDS in the South.

## THE RAISING OF AMERICA

*The Raising of America* explores how a strong start for all children leads to better life course outcomes, including learning, earning, and health, as well as to a healthier, safer, better educated, and more prosperous and equitable America. Join us for a special sneak preview of this compelling documentary from the producers of *Unnatural Causes*.

# PRECONFERENCE WORKSHOP

## CULTURAL COMPETENCY TRAINING: HEARING AND UNDERSTANDING THE PATIENT'S VOICE

**WEDNESDAY, MARCH 5: 1:00 – 3:00 P.M.**

Health philanthropy is deeply committed to health equity. For many funders, this work is focused on helping vulnerable populations overcome language, cultural, and other barriers to quality health care. The Harvard Pilgrim Health Care Foundation's Culture InSight program, for example, has worked since 2008 to improve the cultural and linguistic competency of health care organizations and individual providers. This preconference session will draw from Culture InSight's work, exploring key questions foundations should consider when creating cultural competency training programs, engaging trainers, and/or evaluating proposals to fund training. Led by Shani Dowd, director of the Culture InSight program and a national leader in the field, this highly interactive workshop will allow participants to simultaneously experience an actual Culture InSight training and analyze its features.

## WORKSHOP REGISTRATION FEES

*Lunch is included. A portion of the fees will be donated to the Center for Multicultural Training in Psychology at Boston University School of Medicine.*

### GIH FUNDING PARTNERS

- \$50 per registrant

### NON-FUNDING PARTNERS

- \$100 per registrant

# PLENARY S

Embracing the power of voice is something that the 2014 GIH annual meeting plenary speakers all have in common. These passionate visionaries will demonstrate the importance of using voice to effect change and will broaden your views on how optimal health and wellness can be achieved.

## ALAN JENKINS THE OPPORTUNITY AGENDA

WEDNESDAY, MARCH 5: 5:00 – 6:00 P.M.

Alan Jenkins is executive director of The Opportunity Agenda, a communications, research, and policy organization dedicated to building the national will to expand opportunity for all. Previously Mr. Jenkins was director of human rights at the Ford Foundation and served as assistant to the solicitor general at the U.S. Department of Justice.



## TERRANCE KEENAN AWARD LUNCHEON

THURSDAY, MARCH 6: 1:15 – 2:30 P.M.

GIH is proud to present *The Terrance Keenan Leadership Award in Health Philanthropy* each year. Hear from the 2014 award recipient whose vision and work are the epitome of exceptional.



# SESSIONS

## NADINE BURKE HARRIS CENTER FOR YOUTH WELLNESS

**THURSDAY, MARCH 6: 10:00 – 11:00 A.M.**

Nadine Burke Harris is founder and CEO of the Center for Youth Wellness in San Francisco. Also the founding physician of California Pacific Medical Center's Bayview Child Health Center, Dr. Burke Harris has earned international attention for her innovative approach to addressing toxic stress as a risk factor for adult diseases.



## WAYNE B. JONAS SAMUELI INSTITUTE

**FRIDAY, MARCH 7: 10:00 – 11:00 A.M.**

Wayne Jonas is president and CEO of the Samuelli Institute, whose mission is to transform health care through scientific exploration of wellness and healing. A widely published scientific investigator, practicing family physician, and professor of medicine, Dr. Jonas previously served as director of the Office of Alternative Medicine at the National Institutes of Health.



# BREAKOUT S

Learn about different programs, initiatives, and strategies that grantmakers are undertaking to improve the health of all people. Breakout sessions cover everything from small grants and strategic plans, to community benefits and collaborations, to healthy eating and health insurance marketplaces.

## THURSDAY, MARCH 6: 11:30 A.M. – 1:00 P.M.

- Building Community Connections: Strategic Small Grants
- Building Cross-Sector Partnerships to Address the Social Determinants of Health
- Early Food: Growing a Farm to Preschool Network
- Responding to Catastrophes: Strategies to Address Mental Health Needs
- Something Happened on the Way to Policy Change: Assessing Where You've Been and Where You'll Go
- Transforming Health Leaders into Change Agents
- U.S. Maternity Crisis: Strategic Investments in Midwifery to Improve Access and Reduce Cost
- The Voice of Philanthropy in Effecting Health Systems Change

## THURSDAY, MARCH 6: 3:00 – 4:30 P.M.

- Bringing National Resources to Community Doorsteps
- Engaging Patients and Their Families in Care Delivery
- Integrated Care 2.0: Policy Partners to Drive Change
- Reducing Firearm-Related Violence: A Public Health Priority
- The Role of Foundations in Health Insurance Marketplaces
- What's Keeping You Up at Night: CEOs
- What's Keeping You Up at Night: Program Staff
- What's Keeping You Up at Night: Trustees

# SESSIONS

FRIDAY, MARCH 7: 11:30 A.M. – 1:00 P.M.

- Building Equity from the Inside Out: How to Apply a Health Equity Lens to Our Daily Work
- Collective Impact: Addressing Health Disparities through Community Collaboratives
- Giving Voice to Stakeholders in Times of Change through Strategic Planning
- Grantmakers as Catalysts: Empowering Diverse Elder Communities
- Leveraging the ACA's Community Benefit Requirement for Collective Impact
- Megaphones Are Preventive Medicine: Supporting Community Voices for Health Equity
- Power Dynamics: Amplifying Grantee Voice in Evaluation Design and Implementation
- Work Support Strategies: Facilitating Public Sector Systems Change

VISIT [WWW.GIH.ORG](http://WWW.GIH.ORG)  
FOR SESSION DESCRIPTIONS.

# SITE VISITS

See how philanthropy is doing its part to improve health and wellness in Atlanta by participating in a site visit. *Advance registration is required.*

WEDNESDAY, MARCH 5: 12:30 – 3:00 P.M.

## The Atlanta BeltLine: A Public-Private Partnership to Connect Communities

Piedmont Park is a site of the Atlanta BeltLine project, a successful public-private partnership that is remaking the city's built environment. The project is a \$3 billion investment in a system of streetcars, parks, and multiuse trails that will encircle about 45 neighborhoods. Participants will hear from funders, local government officials, community advocates, and business leaders who will discuss the project's strategy to connect communities, how public and private organizations have worked together, the policy and advocacy efforts involved, and the challenges and road blocks faced. The group will walk a completed section of the multiuse trail, which includes exercise stations funded by Kaiser Permanente.

## Designing Healthy Neighborhoods

This visit to the East Lake neighborhood of Atlanta will examine place-based grantmaking and how stakeholders can come together to create policy and environmental change. Purpose Built Communities works with local leaders to plan and implement holistic revitalization efforts. Participants on this site visit will learn how a struggling neighborhood is transforming into a vibrant, sustainable community. They will also hear from stakeholders in Spartanburg, South Carolina, who are adapting and replicating this model of community revitalization.

## FRIDAY, MARCH 7: 1:30 – 4:00 P.M.

### Addressing the Health and Housing Needs of the Homeless

The Gateway Center is a 24/7 facility providing supportive services to help Atlanta's homeless individuals move into transitional and permanent housing. Through both on-site and referral systems, the Gateway Center offers a range of programs, including primary medical services, mental health care, substance abuse recovery, and recuperative care. St. Joseph's Mercy Foundation will lead site visit participants on a tour of the on-site programs and highlight how Gateway's services are supported through a collaboration of the Regional Commission on Homelessness, United Way, local foundations, regional agencies, and nonprofit partners.

### Ben Massell Dental Clinic: Compassionate Care and Services for those in Need

The Ben Massell Dental Clinic (BMDC), a program of Jewish Family and Career Services, has led the way in providing high-quality dental care at no cost to those most in need for over 100 years. Participants will visit BMDC's new, LEED-certified facility with state-of-the-art donated equipment, and learn about preventative and restorative services provided by volunteer dentists to individuals earning less than 125 percent of the federal poverty level. To further its mission of serving the needy, BMDC partners with the HIV clinic of the local safety net public hospital and another nonprofit clinic to provide Atlanta's only dental residency program.

## SITE VISIT REGISTRATION FEES

*Fees will be donated to the organizations hosting the visits.*

### GIH FUNDING PARTNERS

- \$25 per registrant

### NON-FUNDING PARTNERS

- \$50 per registrant



# AGENDA AT A

## WEDNESDAY, MARCH 5

12:30 – 3:00 P.M.	Site Visits
	<ul style="list-style-type: none"><li>• The Atlanta BeltLine: A Public-Private Partnership to Connect Communities</li><li>• Designing Healthy Neighborhoods</li></ul>
1:00 – 3:00 P.M.	Preconference Workshop
	<ul style="list-style-type: none"><li>• Cultural Competency Training: Hearing and Understanding the Patient's Voice</li></ul>
3:15 – 4:15 P.M.	Newcomers' Welcome
4:30 – 5:00 P.M.	Opening Remarks with Faith Mitchell
5:00 – 6:00 P.M.	Opening Plenary with Alan Jenkins
6:00 – 7:30 P.M.	Opening Reception

## THURSDAY, MARCH 6

6:30 – 7:30 A.M.	Yoga / Power Walk
8:00 – 9:30 A.M.	Continental Breakfast / Network Meetings
	<ul style="list-style-type: none"><li>• Behavioral Health Funders Network Breakfast</li><li>• Health Reform Working Group Meeting</li><li>• Healthy Eating / Active Living Funders Network Breakfast</li><li>• Integrative Health Funders Network Breakfast</li><li>• Kids' Access Funders Network Breakfast</li><li>• National Alliance for Health Equity Funders Network Breakfast</li><li>• Oral Health Funders Network Breakfast</li><li>• Public Health Funders Network Breakfast</li></ul>
9:30 – 10:00 A.M.	Break
10:00 – 11:00 A.M.	Plenary with Nadine Burke Harris
11:00 – 11:30 A.M.	Break
11:30 A.M. – 1:00 P.M.	Breakout Sessions
	<ul style="list-style-type: none"><li>• Building Community Connections: Strategic Small Grants</li><li>• Building Cross-Sector Partnerships to Address the Social Determinants of Health</li><li>• Early Food: Growing a Farm to Preschool Network</li><li>• Responding to Catastrophes: Strategies to Address Mental Health Needs</li><li>• Something Happened on the Way to Policy Change: Assessing Where You've Been and Where You'll Go</li><li>• Transforming Health Leaders into Change Agents</li><li>• U.S. Maternity Crisis: Strategic Investments in Midwifery to Improve Access and Reduce Cost</li><li>• The Voice of Philanthropy in Effecting Health Systems Change</li></ul>

# GLANCE

## THURSDAY, MARCH 6 *CONTINUED*

1:15 – 2:30 P.M.	Terrance Keenan Award Luncheon
3:00 – 4:30 P.M.	Breakout Sessions
	<ul style="list-style-type: none"> <li>• Bringing National Resources to Community Doorsteps</li> <li>• Engaging Patients and Their Families in Care Delivery</li> <li>• Integrated Care 2.0: Policy Partners to Drive Change</li> <li>• Reducing Firearm-Related Violence: A Public Health Priority</li> <li>• The Role of Foundations in Health Insurance Marketplaces</li> <li>• What’s Keeping You Up at Night: CEOs</li> <li>• What’s Keeping You Up at Night: Program Staff</li> <li>• What’s Keeping You Up at Night: Trustees</li> </ul>
4:45 – 6:30 P.M.	Reception
6:00 – 8:00 P.M.	Dine-Arounds + Film Night
	<ul style="list-style-type: none"> <li>• Film Screenings: <i>Age of Champions</i>, <i>deepsouth</i>, <i>The Raising of America</i></li> </ul>

## FRIDAY, MARCH 7

6:30 – 7:30 A.M.	Yoga / Power Walk
8:00 – 9:30 A.M.	Breakfast Roundtables
	<ul style="list-style-type: none"> <li>• GIH Focus Groups</li> </ul>
10:00 – 11:00 A.M.	Plenary with Wayne Jonas
11:00 – 11:30 A.M.	Break
11:30 A.M. – 1:00 P.M.	Breakout Sessions
	<ul style="list-style-type: none"> <li>• Building Equity from the Inside Out: How to Apply a Health Equity Lens to Our Daily Work</li> <li>• Collective Impact: Addressing Health Disparities through Community Collaboratives</li> <li>• Giving Voice to Stakeholders in Times of Change through Strategic Planning</li> <li>• Grantmakers as Catalysts: Empowering Diverse Elder Communities</li> <li>• Leveraging the ACA’s Community Benefit Requirement for Collective Impact</li> <li>• Megaphones Are Preventive Medicine: Supporting Community Voices for Health Equity</li> <li>• Power Dynamics: Amplifying Grantee Voice in Evaluation Design and Implementation</li> <li>• Work Support Strategies: Facilitating Public Sector Systems Change</li> </ul>
1:00 – 2:00 P.M.	Closing Networking Lunch
1:30 – 4:00 P.M.	Site Visits
	<ul style="list-style-type: none"> <li>• Addressing the Health and Housing Needs of the Homeless</li> <li>• Ben Massell Dental Clinic: Compassionate Care and Services for those in Need</li> </ul>

# LOGISTICS

## WHO SHOULD ATTEND

*The Power of Voice* is open to trustees and staff from national, regional, and local grantmaking foundations and corporate giving programs. If you are not a staff member or trustee of a grantmaking organization but would like to attend, contact Mary Backley at 202.452.8331.

## MARKETPLACE

Showcase your organization's work at the annual meeting marketplace. Organizations sending staff or trustees to the meeting are invited to send a display copy of up to four items. Participating organizations will be listed in conference materials. Space is free.

Check off the marketplace box on the registration form if you are interested in participating. Additional information, including a marketplace participation form, will be sent to you. Participation forms must be received by February 10.

## QUESTIONS

Please direct all questions regarding meeting logistics to:  
VRS Meetings & Events Inc.  
202.315.3296 or [gih14@vrsevents.com](mailto:gih14@vrsevents.com).

## GETTING TO THE MEETING

The closest airport to the conference hotel is Hartsfield-Jackson Atlanta International Airport (ATL). For information on airline service, visit [www.atlanta-airport.com](http://www.atlanta-airport.com). Taxi fare is approximately \$45 each way. The conference hotel does not provide shuttle service.

# FOLLOW US ON TW

## HOTEL INFORMATION

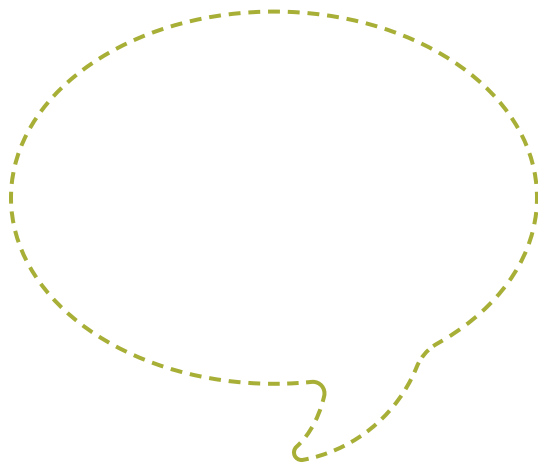
InterContinental Buckhead Atlanta  
3315 Peachtree Road NE  
Atlanta, GA 30326  
Reservation phone: 877.622.2115 or 404.946.9191

Visit [www.gih.org](http://www.gih.org) for the hotel reservation link.

A block of rooms has been reserved for GIH meeting attendees at the special rate of \$215/night for single, double, or triple occupancy.

Reserve on-line at [www.gih.org](http://www.gih.org) and follow the link to the “2014 GIH Annual Meeting” page, or call 877.622.2115 or 404.946.9191. Be sure to mention the Grantmakers In Health room block to receive the discount rate, available until February 3, or until the room block is filled, whichever occurs first. Reservations received after February 3 or after the room block is filled will be accepted on a space-available basis and may be at a higher rate.

*Registering for the meeting does not automatically reserve a room at the hotel.*



# ITTER #GIH2014

# REGISTRATION

## REGISTER ON-LINE

Register on-line by **Monday, February 10** at [www.gih.org](http://www.gih.org). A hard copy registration form is available on the GIH Web site for those who wish to register by mail or fax.

## PAYMENT

Payment must accompany registration in order to be processed.

### ANNUAL MEETING

- GIH Funding Partners: \$700 per registrant
- Non-Funding Partners: \$1,400 per registrant

### PRECONFERENCE WORKSHOP

- GIH Funding Partners: \$50 per registrant
- Non-Funding Partners: \$100 per registrant

### SITE VISITS

- GIH Funding Partners: \$25 per registrant
- Non-Funding Partners: \$50 per registrant

## CONFIRMATION

Confirmation e-mails will be sent to those who register by February 10 and will serve as an official receipt. Confirmation receipts for registrations received after February 10 will be available on site at the meeting.

## LATE FEES AND CANCELLATIONS

A late fee of \$150 will be charged to attendees whose registration forms are received after February 10. Pending availability, on-site registration will be accepted with a surcharge of \$150 in addition to the late fee. Cancellations in writing, received no later than February 10, will receive a refund, less a \$150 administrative fee. No requests for refunds after this date will be accepted; however, a substitute participant may attend the meeting by notifying GIH in advance.

# REGISTER BY FEBRUARY 10.





VISIT [WWW.GIH.ORG](http://WWW.GIH.ORG)  
FOR COMPLETE MEETING DETAILS.

1100 CONNECTICUT AVE, NW • SUITE 1200 • WASHINGTON, DC 20036



# THE POWER OF VOICE

GRANTMAKERS IN HEALTH  
ANNUAL MEETING ON HEALTH PHILANTHROPY  
MARCH 5-7, 2014 ATLANTA, GEORGIA

FOR MORE INFORMATION, VISIT [WWW.GIH.ORG](http://WWW.GIH.ORG).