

THE KRESGE FOUNDATION

Creating an Integrated Child Health System Using a Population Health Perspective

Grantmakers In Health

April 29, 2014
Washington, DC

Health ≠ Health care

Where You Live Matters

It Matters A LOT!

The background of the slide is a solid blue color. In the bottom right corner, there are several faint, concentric white circles that resemble ripples on water, adding a decorative element to the design.

STOCKTON
95202
Life Expectancy

73



IRVINE
92606
Life Expectancy

88

Your **ZIP Code** shouldn't
predict **how long you'll live**,
but it does.



www.calendow.org

health
happens
here



Significance of Assessments on SDOH

Center for
School,
Health and
Education

- Middle School
 - **17% had sex/18% unsafe**
 - **30% sad or nothing to look forward to**
 - **24% carried a weapon**
 - **46% got in trouble because of anger**
 - 35% missed school for work, transpo or care
 - 34% less than a C in one or more classes
- High School
 - **51% had sex/25% unsafe**
 - 39% missed school for work, transpo or care
 - **35% carried a weapon**
 - **32% felt sad or hopeless**
 - **28% got in trouble because of anger**
 - 21% smoked marijuana or other street drugs
 - 32% less than a C in all classes

Current Standard of Care

- 33 year old uninsured woman presents with 4 week history of severe throbbing frontal headaches.
- 3 visits to emergency room at 2 different hospitals in last 3 wks
 - 2 Head CTs
 - 1 Lumbar Puncture
 - Blood tests... “all normal”



Photo taken with permission

SocHx: Damp, Moldy Home
Dx: Migraines/ Sinus
Headaches + Allergic Rhinitis
Tx: Symptom relief + Housing
Case Management

You have 10 minutes

The Problem:

Unhealthy social conditions drive disease and health disparities, costing Americans **over \$400 billion/year**.

People who bear the burden of these unhealthy conditions often interact with the health care system.

But 4 out of 5 physicians don't feel equipped to address their patients' social needs.

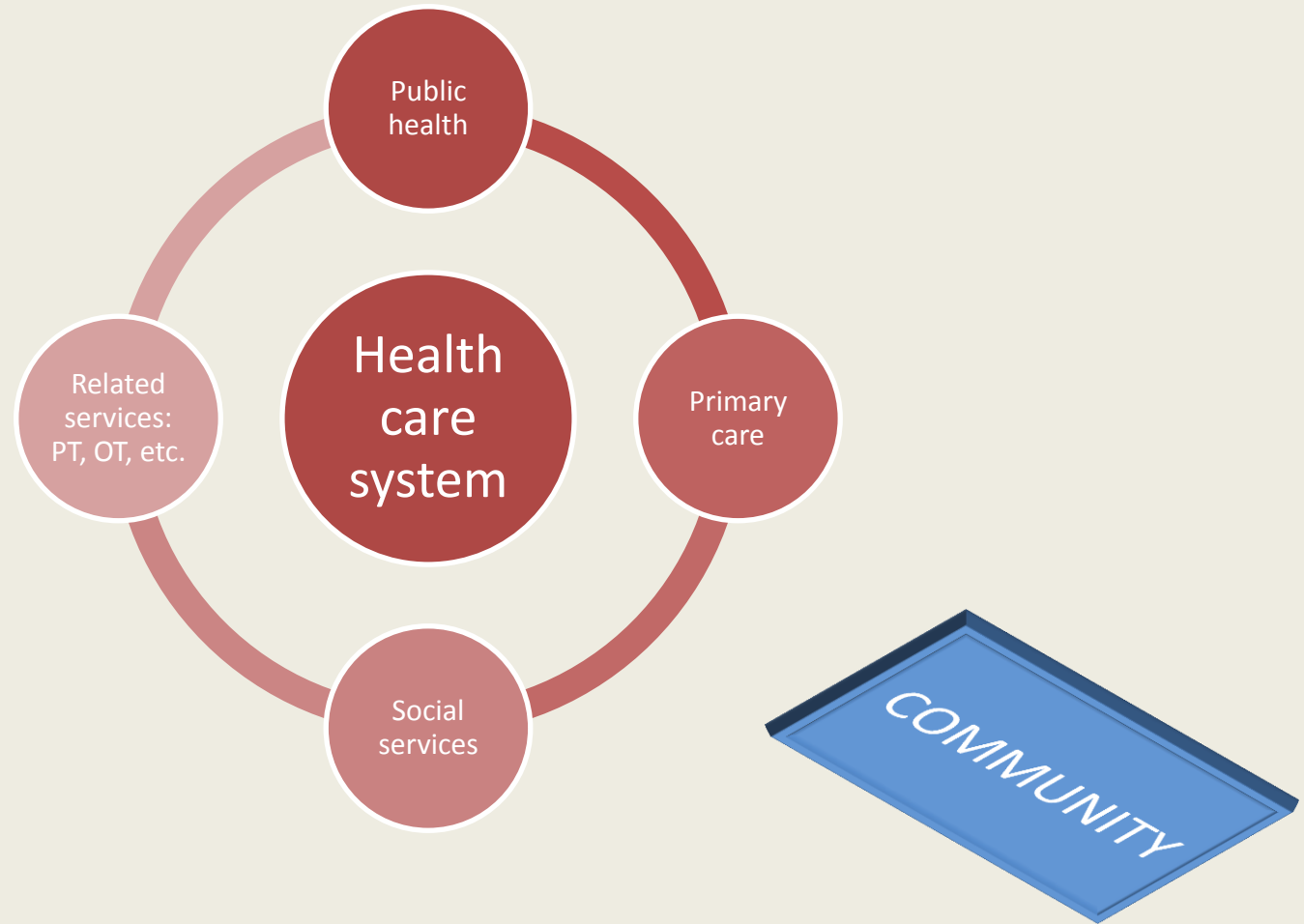


Challenge:

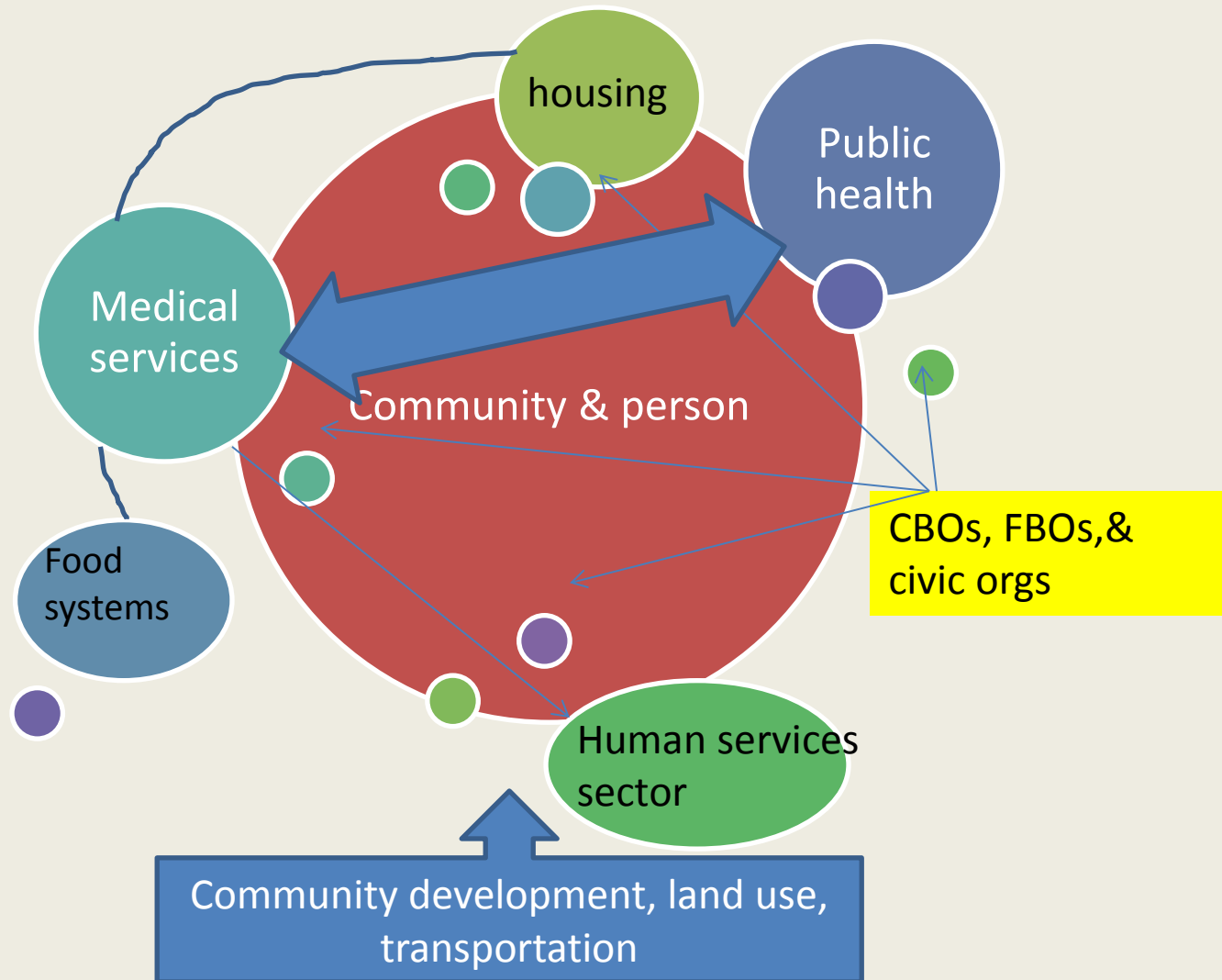
Can we treat people while changing the conditions that make them sick?

***HOW CAN WE CONNECT THE
CLINIC TO UPSTREAM
DETERMINANTS OF
HEALTH?***

Delivery-centric system



Community-centered system



COMMUNITY CENTERED HEALTH SYSTEMS

- Focused on HEALTH
- Value driven
- Achieves health equity
- Multi-sectoral, multi-system
- Community-centric, not delivery-centric



Some reading

- *Community-Centered Health Homes*, Prevention Institute, 2011
- *Community Health Centers Leveraging Social Determinants of Health*, Institute for Alternative Futures, 2012
- Rishi Manchanda, MD, *Upstream Doctors*, 2013 (eBook only)