

THE CONTEXT FOR ENGAGEMENT: HOW HAVE CITIZENS* CHANGED?



- More educated
- More skeptical – different attitudes toward authority
- Have less time to spare
- Better able to find resources, allies, information (Internet)

* citizens = residents, people

THREE MINUTES AT THE MICROPHONE



Retrieved from Cincinnati.com, July 27, 2012

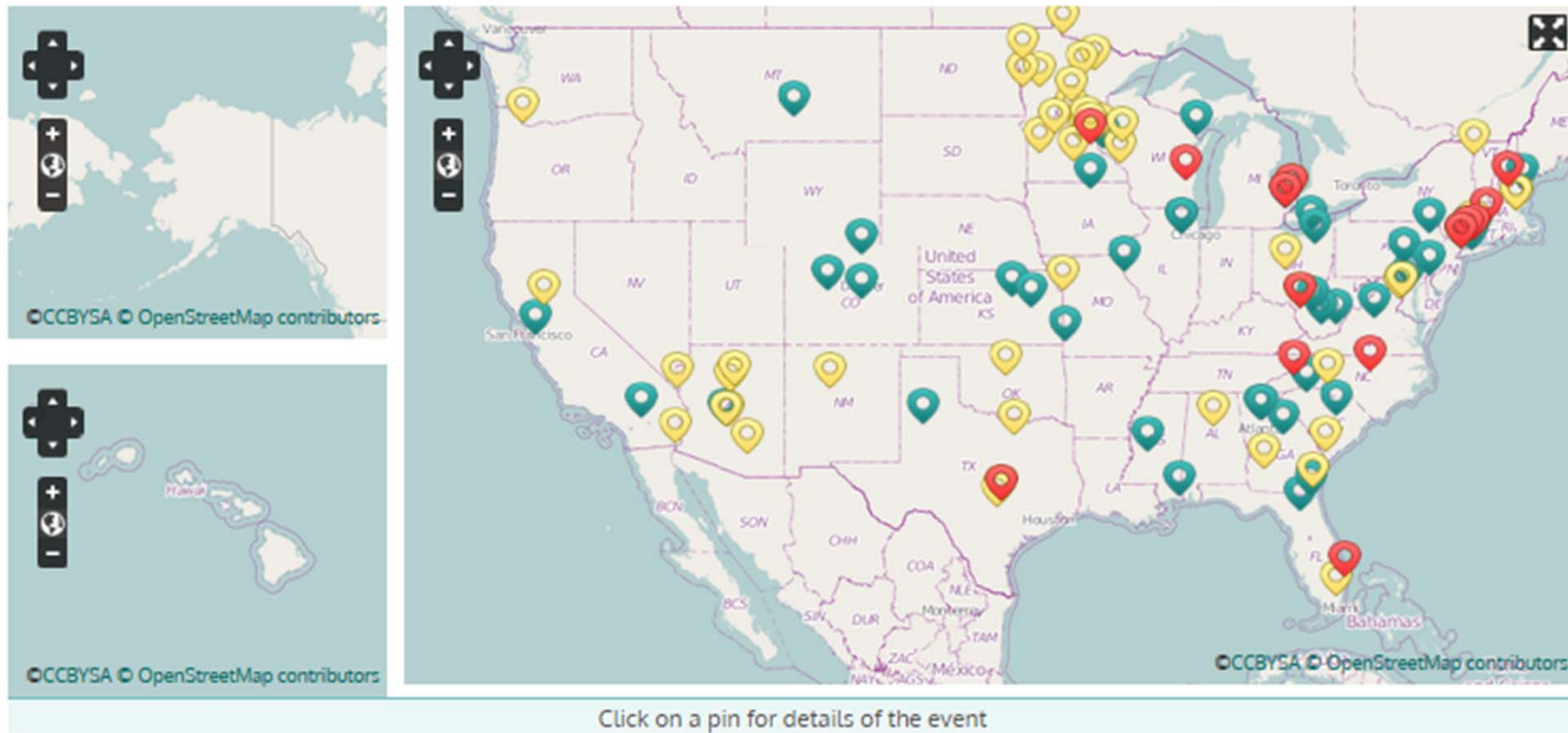
TREATING CITIZENS LIKE ADULTS

Give them:

- Information
- Chance to tell their story
- Choices
- Legitimacy
- Chances to take action
- Good process
- Food and fun!




THE NATIONAL DIALOGUE ON MENTAL HEALTH



 Previous Events

 Upcoming Events

 Events being planned

Use the map to
FIND A DIALOGUE
near you

Learn how to
LAUNCH A DIALOGUE
in your community

STRENGTHS OF DELIBERATIVE ENGAGEMENT

- Making policy decisions, plans, budgets
- Catalyzing citizen action
- Rebuilding trust, fostering new leadership

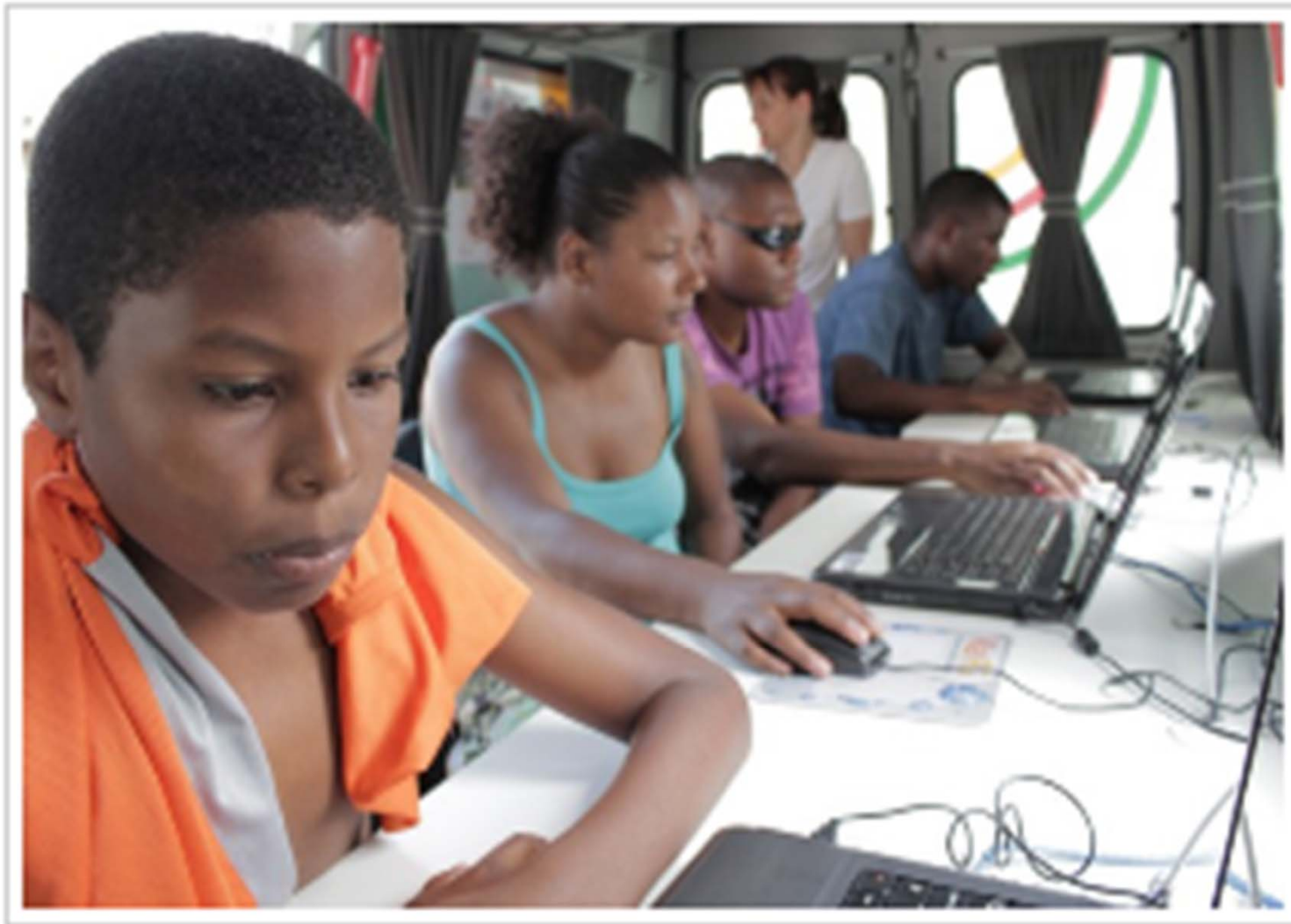


LIMITATIONS OF ENGAGEMENT IN THE US

- Lots of work for temporary gain
- Inefficient – every organization on its own
- Community moves back to ‘politics as usual’



SUSTAINED ENGAGEMENT IN THE GLOBAL SOUTH



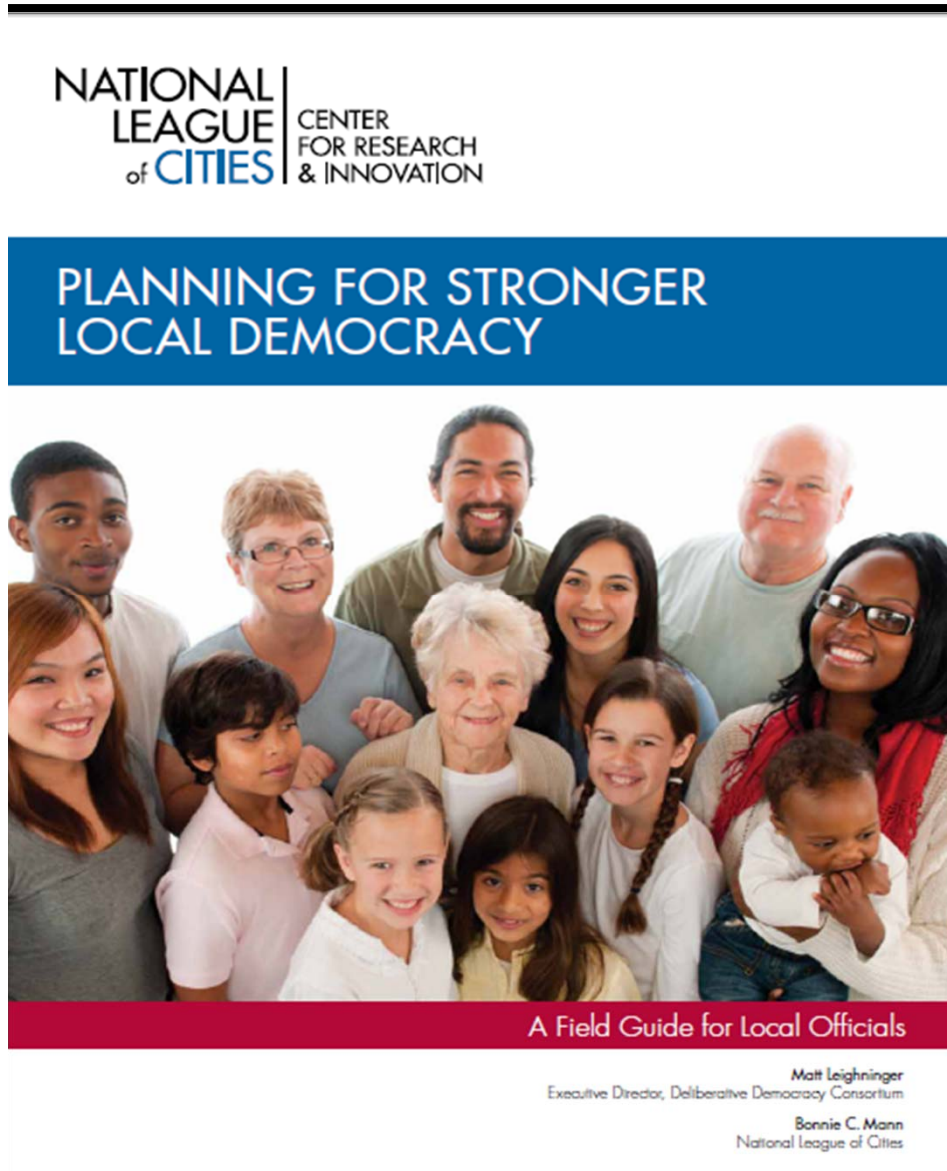
WHY SUSTAINED ENGAGEMENT?

Increases in:

- Trust
 - Efficiency
 - Equity
 - Connectedness
- ...which increases:
- Economic growth
 - Public health



HOW TO SUSTAIN ENGAGEMENT?



- Go where the people are
- Mix online and face-to-face
- Change participation laws
- Provide democratic skills
- Strengthen civic infrastructure