



# Investing in Legal Aid to Promote Individual and Population Health

Moderator: Mary McClymont, President, Public Welfare Foundation

Jim Sandman, President, Legal Services Corporation

Wendy Yallowitz, Program Officer for Vulnerable Populations, Robert Wood Johnson Foundation

Stacey Barbas, Senior Program Officer for Health, The Kresge Foundation

Woody Thorne, Vice President, Community Affairs at Southern Illinois Healthcare

Ellen Lawton, Director, National Center for Medical-Legal Partnership

A photograph of two women sitting at a table in what appears to be a library or office setting. They are looking at something together, possibly a document or a device. The background shows bookshelves filled with books. The image is overlaid with a semi-transparent blue filter.

# NATURAL ALLIES: PHILANTHROPY AND CIVIL LEGAL AID

---

INVESTING TO HELP LOW-INCOME PEOPLE SOLVE THEIR LEGAL PROBLEMS IS SMART, RESULTS-ORIENTED PHILANTHROPY. FOR DECADES, ALL OVER THE COUNTRY, LEGAL AID GROUPS HAVE BEEN A DRIVING FORCE THAT MAKES CHANGE REAL IN MILLIONS OF LIVES. THEY HAVE ANSWERS WHEN FAMILIES NEED HOUSING, FOOD, HEALTH CARE. IT'S THEIR WORK THAT CORRECTS BAD POLICY AND CHANGES HOW SOCIETY TREATS THE MOST VULNERABLE.

Report available online at: [www.publicwelfare.org/NaturalAllies.pdf](http://www.publicwelfare.org/NaturalAllies.pdf)

# Webinar Overview

## Moderator

– **Mary McClymont**, President, Public Welfare Foundation



## Speakers



**Jim Sandman**,  
President,  
Legal Services  
Corporation



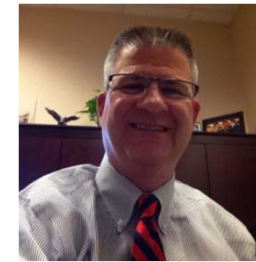
**Ellen Lawton**,  
Director,  
National Center  
for Medical-Legal  
Partnership



**Wendy Yallowitz**,  
Program Officer for  
Vulnerable Populations,  
Robert Wood Johnson  
Foundation



**Stacey Barbas**,  
Senior Program  
Officer for Health,  
The Kresge  
Foundation



**Woody Thorne**,  
Vice President,  
Community Affairs  
at Southern Illinois  
Healthcare

# Today's Agenda

- Speaker Discussion – 35 minutes
- Audience Q&A – 25 minutes




# What is the Legal Services Corporation?

- Established by an Act of Congress in 1974 to fund civil legal aid programs covering the United States
- Funding comes entirely from a congressional appropriation
- Supports 134 independent legal aid programs, with more than 800 offices serving every county in every state, and the territories
- The backbone of the civil legal aid system

## Overview of Funding for Legal Aid

- **19% reduction in LSC funding since 2010**
- **Second largest funding source reduced by 75%**
- **Other current funding sources are precarious**
- **Funding per eligible client has declined**
- **Need at an all-time high**

## LSC FUNDING PER ELIGIBLE CLIENT

YEAR	LSC Funding in Inflation-Adjusted (2012) \$\$ Per Eligible Client	Estimated Client Eligible Population (Income < 125% of Poverty)
'94	\$ <b>12.30</b>	 50,401M
'04	\$ <b>8.20</b>	 49,693M
'12	\$ <b>5.67</b>	 61,358M

# 50 million Americans need legal care to be healthy.



1 in 6 Americans live in poverty.

And every single one has a civil legal problem that negatively affects their health.



# Legal problems *are* health problems.

Social Determinant of Health	Common Legal Problem
Lack of basic resources	Families wrongfully denied food supports and educational benefits
Physical environment	Children living in housing with mold or rodents, in clear violation of housing laws
Lack of access to insurance	Seniors wrongfully denied long-term care coverage

# Medical-Legal Partnership

A healthcare delivery model that integrates legal care directly into patient health care to address and prevent health-harming legal needs.

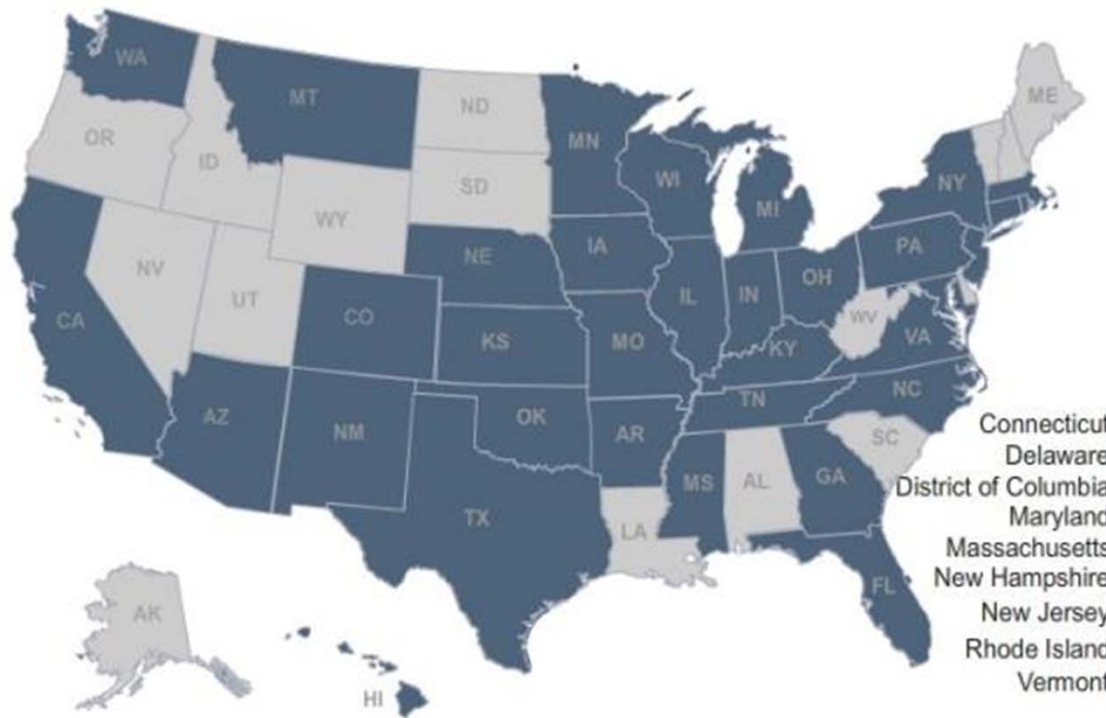
School of Public Health  
& Health Services

THE GEORGE WASHINGTON UNIVERSITY

Department of Health Policy

THE GEORGE  
WASHINGTON  
UNIVERSITY  
WASHINGTON, DC

# MLP Across the U.S.



**36** States

**136** Hospitals

**145** Health Centers

**107** Legal Aid  
Agencies

School of Public Health  
& Health Services

THE GEORGE WASHINGTON UNIVERSITY

Department of Health Policy

THE GEORGE  
WASHINGTON  
UNIVERSITY  
WASHINGTON, DC

# Robert Wood Johnson Foundation's Vulnerable Populations' Portfolio

---

Much of the Foundation's work is based on the fact that the health of all Americans, particularly the health of the most vulnerable people in our society, is influenced significantly by factors outside of the health care system. These factors are social determinants of health.

## Working Together = Culture of Health

---

Medical practitioners can make a huge impact by gaining a deeper understanding of the social determinants of health (SDOH) and of how many SDOH have legal underpinnings.

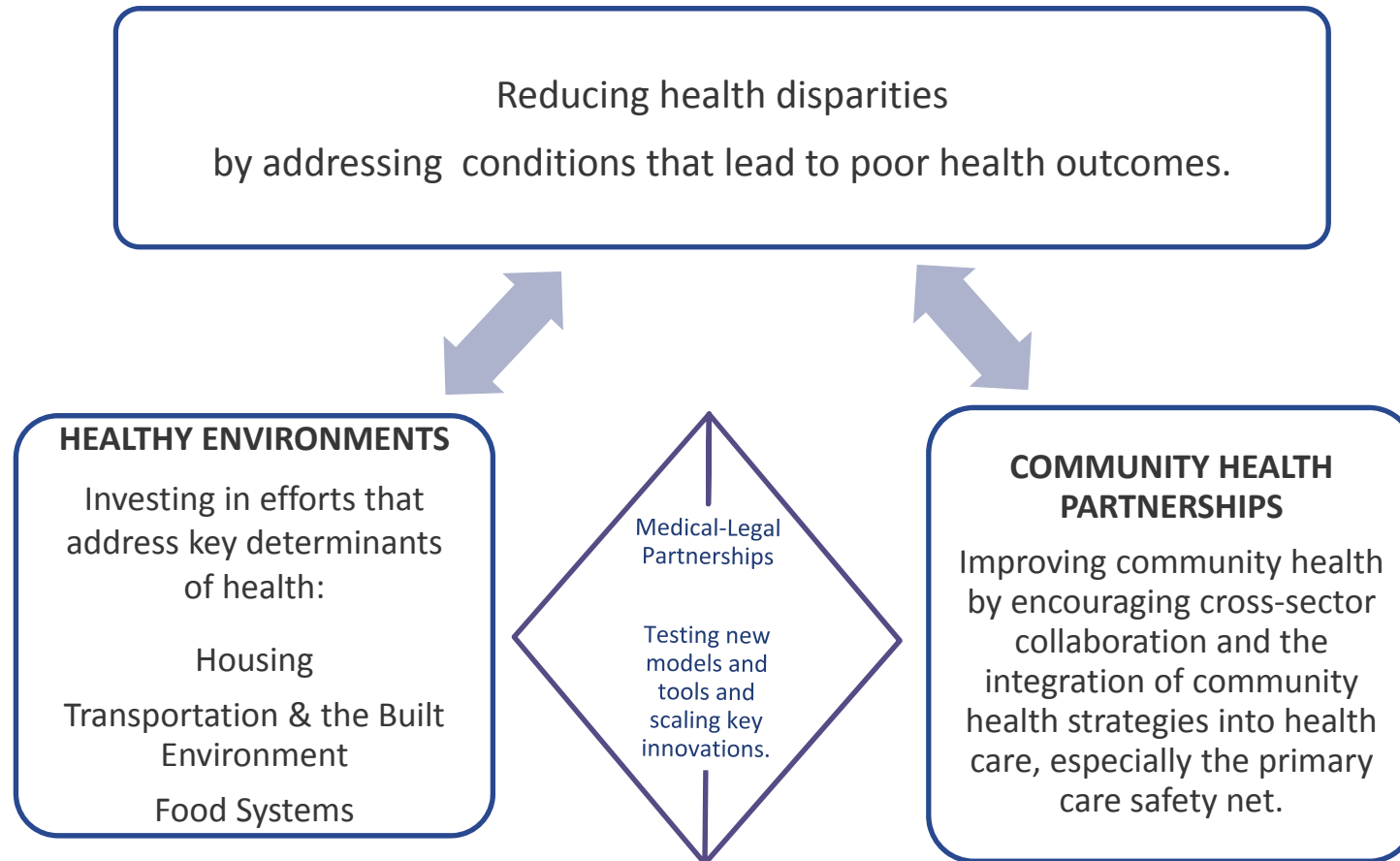
## Overview

Kresge is a \$3 billion private, national foundation that works to expand opportunities for vulnerable people living in America's cities.

Through the work of our programs and partners, residents can improve their life circumstances and join the economic mainstream.



# Health Program



## Medical-Legal Partnership Investments

### **National Nursing Centers Consortium - Philadelphia, PA**

2013 – 2016

*Integrating Legal Services into Nurse-Managed Primary Care*

### **DNA People's Legal Services - Window Rock, AZ**

2011 – 2014

*Development of an MLP program model practice for Indian Health Services across the nation*

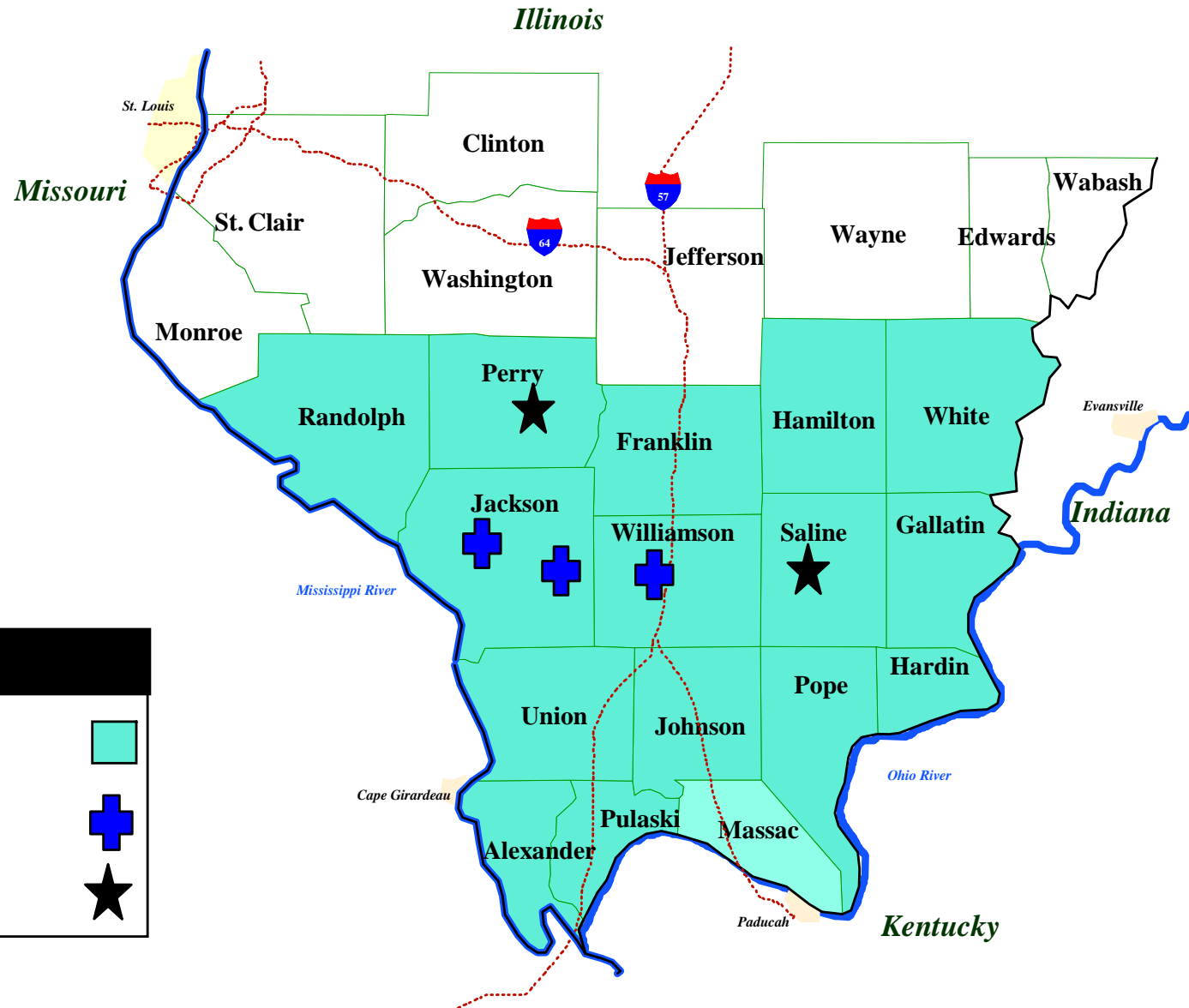
### **George Washington University - Washington, DC**

2011 – 2015

*Expanding the capacity of local and regional MLPs in policy, evaluation and program activities*

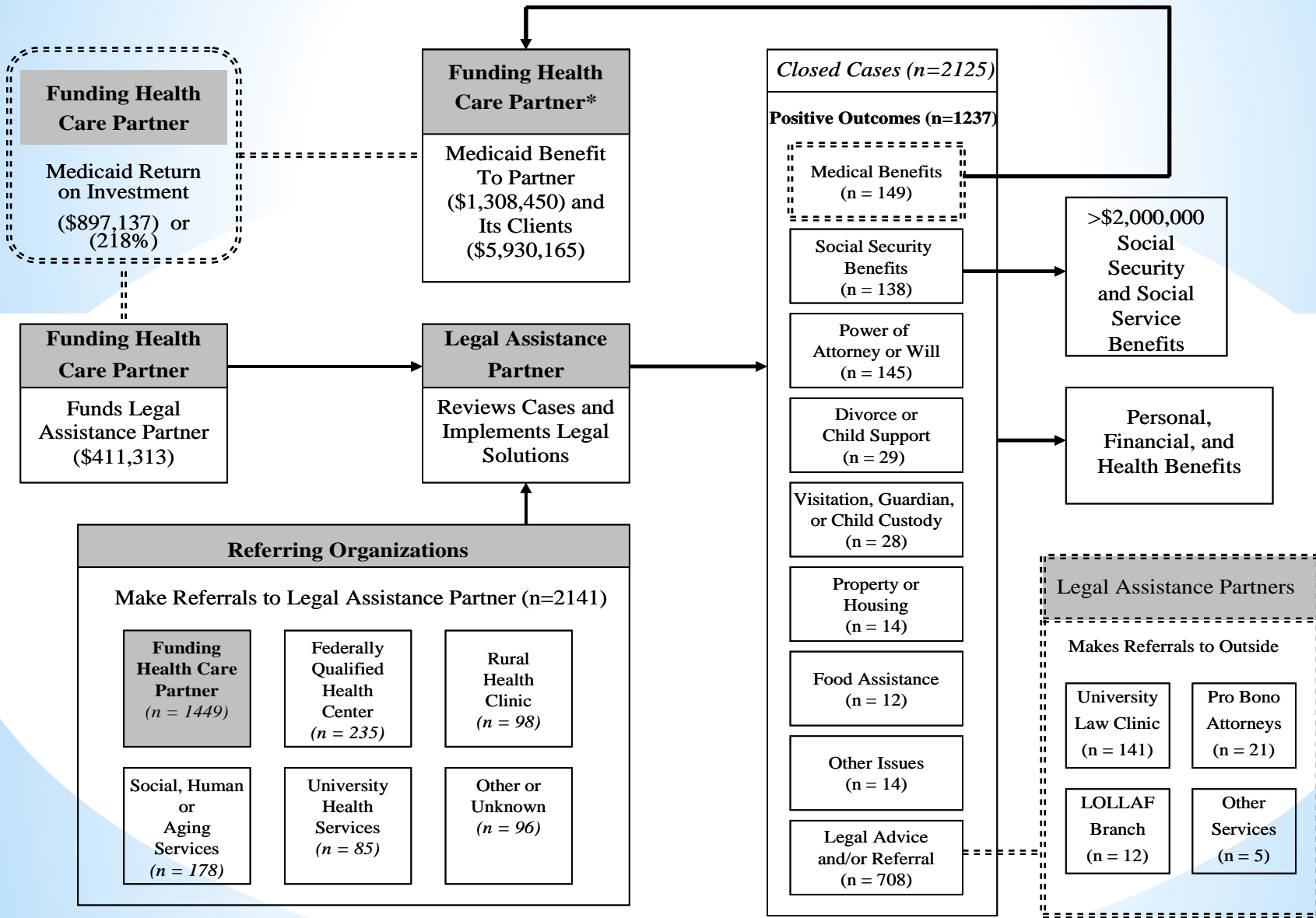


# Southern Illinois Healthcare



Key	
16- County Market Area 2011 Population: 339,563	
SIH Hospitals	
SIH Affiliates	

**Figure 1. Summary of Medical Legal Partnership of Southern Illinois (MLPSI) investments, referrals, and outcomes.**





## Here's What Grantmakers Can Do Now

- Identify grantmaking programs that could achieve improved outcomes and reach their goals more efficiently by adding civil legal aid partners.
- Identify and eliminate unintended barriers that can prevent legal aid providers from becoming grantees and subgrantees.
- Invite current grantees to investigate collaborations with legal advocates for those they serve.
- Partner with state IOLTA funders [www.ambar.org/IOLTADirectory](http://www.ambar.org/IOLTADirectory) to identify legal aid programs that match your funding priorities.
- Provide general support for the legal aid groups that serve your own communities.

Learn more about legal aid and areas of need by visiting:

- American Bar Association >> [www.ambar.org/sclaidinitiatives](http://www.ambar.org/sclaidinitiatives)
- Legal Services Corporation >> [www.lsc.gov](http://www.lsc.gov)
- National Legal Aid and Defender Association >> [www.nlada.org/civil](http://www.nlada.org/civil)
- National Center for State Courts >> [www.ncsc.org/atj](http://www.ncsc.org/atj)



Press \*6 to unmute your line.