

BRAIN HEALTH: Trends in Practice, Policy and Parity

"LIFT UP WHERE WE ARE COLLECTIVELY!"

* UNLOCK THE KEY QUESTIONS!

- OCTAVIO MARTINEZ
- WILLIAM EMMET

INSPIRATION!



COLLABORATION!

- MARIEL HARRISON
- LARKE HUANG
- LINDA ROSENBERG

* Get passionate about DREAMS! (NOT ISSUES)

SUCCESS TODAY IS YOUR INVOLVEMENT!!

Two WORDS??

- Poorly understood (system)
- Hard/Hopeful
- Abundant Possibilities!
- "It's EVERYBODY'S BUSINESS!"



Need a continuum of care but need to define stages eg. "INTERVENTION"



"PROBATIONARY APPROACH?"

- Not demonstrative
- Shared understanding

ENGAGING YOUNG PEOPLE??

- TALK TO YOUNG PEOPLE!
- MAKE IT THE NORM TO INCLUDE THEM!

HELP THEM FEEL "NOT STIGMATIZED!"



How can funders make sure we can MOVE FORWARD?

- Parity has been front & center in behavioral health for some time
- It's a process... Parity is playing out w/out clear definition
- WORK = NON-QUANTITATIVE TREATMENT RESEARCH AREA

* PARITY!

Who can people appeal to??

* FUNDERS CAN HELP TO EDUCATE AROUND THESE COMPLICATED ISSUES!!

Provide Tools! eg. PARITY TRACK.ORG

Help Consumers know their rights!

Need federal Govt. Guidance

Laws enforced primarily at state level & in courts

What are the TRENDS??

- "I'VE STOPPED USING THE WORD 'REFORM'!"
- LOTS OF CHANGE! eg. structural changes Insurance Companies buying each other up Hospital Centers, etc.

We've made tremendous PROGRESS! LET'S NOT FORGET!

FEWER PEOPLE ARE TALKING ABOUT CLINICAL ISSUES!

Healthcare has become a COMMODITY!

* ACCESS IS THE ISSUE NOT STIGMA!

MAKING IT SUSTAINABLE?

YOU MUST HAVE A POLICY PIECE!



What Policy Changes will make it sustainable?

** Things are EVOLVING! **

DISPARITY

Populations of color have difficulty accessing quality services

Working on equity, divergent care, getting people reestablished

EDUCATION!

Social-emotional issues are KEY to ensuring outcomes!

BEHAVIORAL HEALTH IS BECOMING PART OF EDUCATION SYSTEM!

FROM INDIVIDUAL... TO POPULATION HEALTH!



* WORKING ON ACCESS TO HEALTH INSURANCE

Health Literacy
INTEGRATED CARE!

* There's a direct correlation between mental health & poverty

NEED PHILANTHROPY TO FUND ADVOCACY!

NEED TO TALK ABOUT ACCESS AND STIGMA!!
* MAKE THE CONVERSATION MAINSTREAM!!

BUILD EVIDENCE-BASED SYSTEM!

NEURO PLASTICITY!

* VIOLENCE IS A PUBLIC HEALTH ISSUE

ENGAGE PRIVATE INDUSTRY!

They're LOOKING for ways to participate!

WORK ON SYSTEMIC TRENDS

* DOMINO EFFECT!!
Poverty
Racial Disparity
Generation Trends

VIOLENCE + DISPARITY + MENTAL HEALTH

Biological illness?
Unmet mental health issues?

HUMAN SERVICE

USDA WICK PROGRAM

PUBLIC-PRIVATE PARTNERSHIPS

What can & can't we do with FEDERAL FUNDS?

* INDIVIDUAL TRAUMA

* COMMUNITY TRAUMA

Works the behavioral health intervention?

START W/ NEW PARENTS!

Need a global budgeting approach!

* IT'S AN INVESTMENT!



* LOOK AT THE EARLIEST POSSIBLE INTERVENTION (in utero)

THINK BEYOND TRADITIONAL MODELS!

FOCUS ON SOCIAL-EMOTIONAL DEVELOPMENT

USE OTHER FUNDS THROUGH POLICY & GOVT

CASH TRANSFER

FUND PARENTS!

Who can reach broader numbers of people?
Help mothers approach!

DECREASE IN LONGEVITY OF POOR WHITE POPULATIONS

> SUICIDE > SUBSTANCE ABUSE

"PTSE" (NOT PTSD)
PERVASIVE TRAUMATIC STRESS ENVIRONMENT

BRAIN HEALTH

YOUNG PEOPLE ARE TWEETING ABOUT EVERYTHING THESE DAYS!

FUND EDUCATION CAMPAIGNS!

LOOK AT WHO WE'RE SERVING & WHO WE'RE NOT

BE DATA-DRIVEN!
IMPROVE ACCESS EFFORTS!

How do we BREAK DOWN THE SILOS???

WHOLE HEALTH!

MENTAL
BEHAVIORAL HEALTH
SPIRITUAL
PHYSICAL
VISA, HEALTHY EATING, etc.

MOST IS STILL "FEES FOR SERVICE"

What does "Whole Health" really mean??

* **ENGAGING the FAITH COMMUNITY**

eg. OPEN TABLE - METHODIST CHURCH



* **ELEVATE WHAT WORKS + STRIVE for INNOVATION!**



* **EARLY CHILDHOOD EDUCATION**

How do we HELP SCHOOLS in looking at READINESS?? (AUSTRALIAN MODEL)

Children who are TOO SAD or TOO MAD can't ADD!!

* **LEADERSHIP!**

MENTORING!

TALK ABOUT THE DIFFERENCES WE'RE MAKING! NOT JUST THE PROBLEMS!

eg. Tap into Hispanic Community Leaders

* **INSPIRE CAREERS!**



* **We value health care but not for EVERYONE!**

COULD "WHOLE HEALTH" EXTEND MUCH MORE BROADLY??

What is WHOLE HEALTH in a COMMUNITY?
How do we operationalize it?
Do people DO better?



* **We can NOT be SILOED!!**

Change is inevitable if we WORK TOGETHER!!



IDEA LAB

* ENSURE EQUAL ACCESS!

@ All Men & Women are Created Equal!



@ Change is difficult but good!

@ We can do our work FASTER & GO FURTHER TOGETHER!!

CONNECT!
COMMUNICATE!
COLLABORATE!

"HEALTH CAN'T HAPPEN WITHOUT CULTURE CHANGE!"

@ BRING BOTH:



* PUSH TOGETHER IN THE SAME DIRECTION!

Deliver services that are effective in context!!

* MAKE A DIFFERENCE!

* INTEGRATION OF SYSTEMS & STRATEGIES!

* CREATING A SAFETY NET FOR CHILDREN & FAMILIES!



eg. "BUILD"

Leverage private funding to help states!

ADVOCACY + POLICY + SYSTEMS BUILDING

- MAXIMIZE PUBLIC-PRIVATE PARTNERSHIPS
- LEADERSHIP & TRAINING
- INNOVATIVE POLICIES & SYSTEMS EVALUATED IN THE FIELD
- PHILANTHROPIC LEVERAGE

FEARS:

- Disconnect between what we know works & what's happening on the ground
- TRULY INTEGRATING SYSTEMS
- FINANCING OF EARLY LEARNING & HEALTH SYSTEMS
- IMPLICIT BIAS & RACISM IMPACT
- RESOURCES for TRAINING & RESOURCES TO ADDRESS CHILD NEEDS/ STRENGTHEN FAMILIES & COMMUNITIES
- OPIATE EPIDEMIC - 18-42 yr olds predominantly

ONLY the TIP of a LARGER Epidemic!

Heroin → Speed
ONE EPIDEMIC FOLLOWS ANOTHER!

THERE ARE YOUTH HUKETINGS!

NEW DIRECTIONS!

- + Practice transformation models
- + LEVERAGE EXISTING RESOURCES! Catalyst to strategies we know work!
- + Aggregate & synthesize the CURRENT EVIDENCE BASE
- + New payment models
- + LEVERAGE PUBLIC FUNDING!
- + CENTER FOR EXCELLENCE!
- + CODBG
- + EARLY LEARNING SYSTEMS
- + PARTNER with COMMUNITY FOUNDATIONS
- + DEEP SUSTAINED INVESTMENT OVER TIME eg. OPIATE EPIDEMIC ALCOHOL MARIJUANA
- + ADVOCACY
- + PARTNER TO SOLVE BEYOND HEALTH CARE ISSUES!
- + SHUT OFF THE PIPELINE AT THE FRONT END!

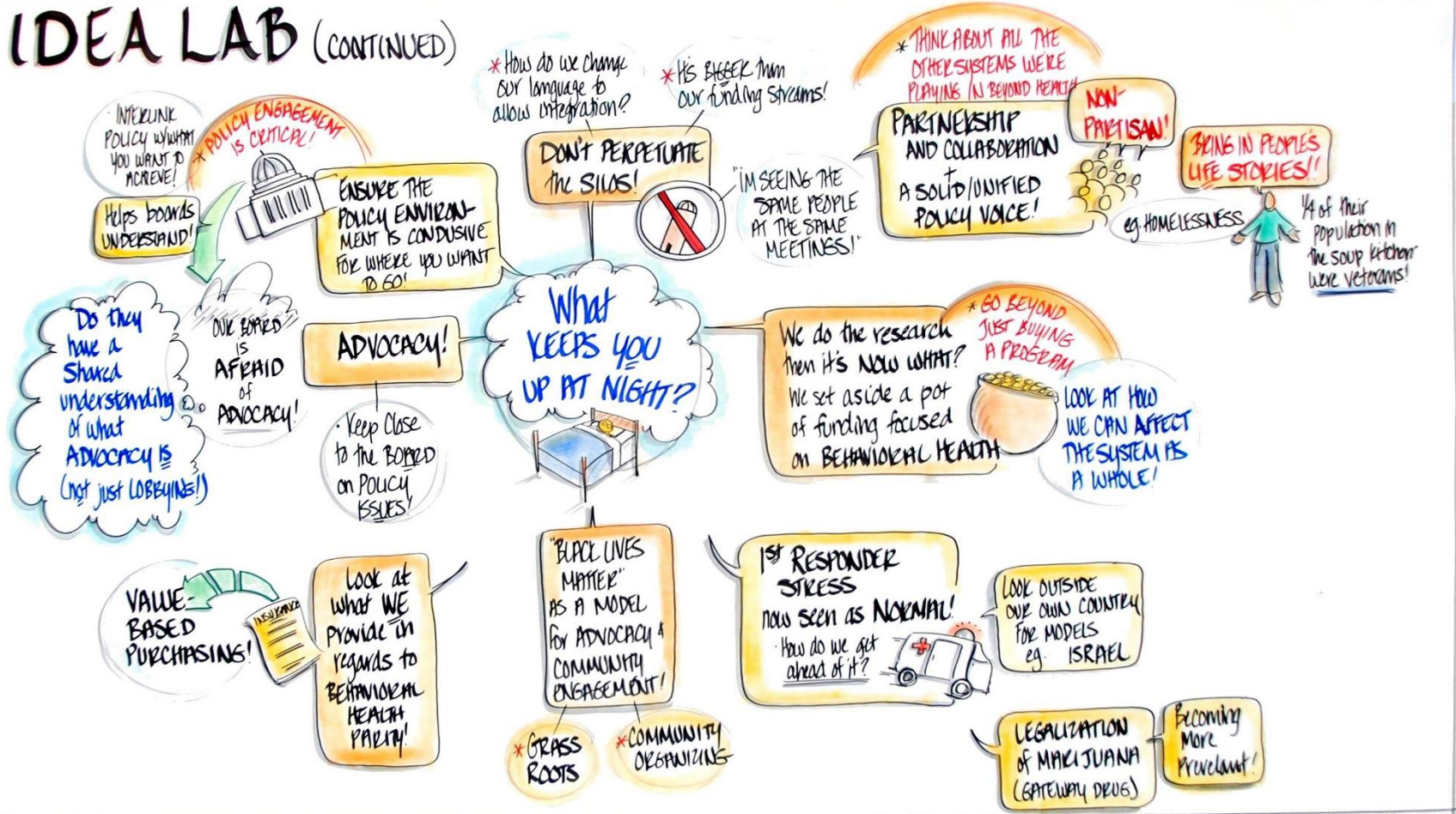
* WORK OVER THE LIFESPAN!!

+ KEEP YOUTH IN MIND!

+ PATIENT-CENTERED APPROACHES

+ FUNDING FOR PRIVACY RIGHTS VIOLATIONS

IDEA LAB (CONTINUED)



Lauren LeRoy Health Policy Lecture - Michael Botticelli



SMALL GROUP REPORT-OUTS

CRIMINAL JUSTICE

- STOP MASS INCARCERATION



Step outside of our sphere

TELL THE STORIES OF RECOVERY!

* SHOW FISCAL & HEALTH IMPACTS!

FINANCE

THIS IS ALL PRETTY COMPLICATED!

- Urgency re: finance & payment models
- Broad community support - so many know someone...
- ALLIES: law enforcement & corrections
- OPPORTUNITIES: Provide tech. assist to states re: metrics & bundled plans

INTEGRATED CARE

THINK BROADER IN TERMS OF OTHER AREAS

- Payment Reform ISSUES
- Payment & Delivery & Reimb.
- Without payment mechanisms training won't mean a thing
- More training BEHAVIORAL HEALTH



SOCIAL DET. OF HEALTH

CALL TO ACTION! CRITICAL MASS! BEING MORE PARTNERS TO THE TABLE!

THREATS:

- IT'S SUCH A BIG THING TO LOOK AT!
- COMPLEXITY!
- LACK OF KNOWLEDGE
- TOO FAR IN FUTURE TO MEASURE CHANGE
- COMPLACENCY = THREAT TO SUSTAIN.
- TURF ISSUES/ SILOS!

Inside our orgs & out!

TRAUMA

- MOVEMENT BUILDING BUT WHAT'S THE STRATEGY?
- IS THIS ITS OWN THING OR PART OF OTHERS?
- HOW DO WE FIND IT?

EARLY INTERVENTION

"we're Scattershot"

- More alternative providers eg. Retail mid-level clinics
- More evidence/More science
- Leverage Social Media
- There's a movement that PREVENTION IS WHERE WE NEED TO BE
- A LOT OF FUNDING INTEREST!
- Increased acceptance of alternative medicine, meditation, etc.

AFFORDABLE CARE ACT & MEDICAID

- How do we move towards a more integrated model?
- Aging population!
- How do we help our govt.?

OPIOIDS

CRIMINALIZATION OF WOMEN

- AWARENESS
- COMPREHENSIVE WOMEN'S DATA
- ALLIES - EVERYONE HAS A ROLE TO PLAY!
- FUNDERS CAN CONVINCE PEOPLE!

EVIDENCE!

1st RESPONDER FATIGUE

CREATE A COLLABORATIVE!